

MOD QW100



Light Efficiency:

36 Lumen/Watt

Light Quality:

CRI: 70.4

Color Temperature:

6960 K

Output: 1100 lm

Peak: 1987 cd

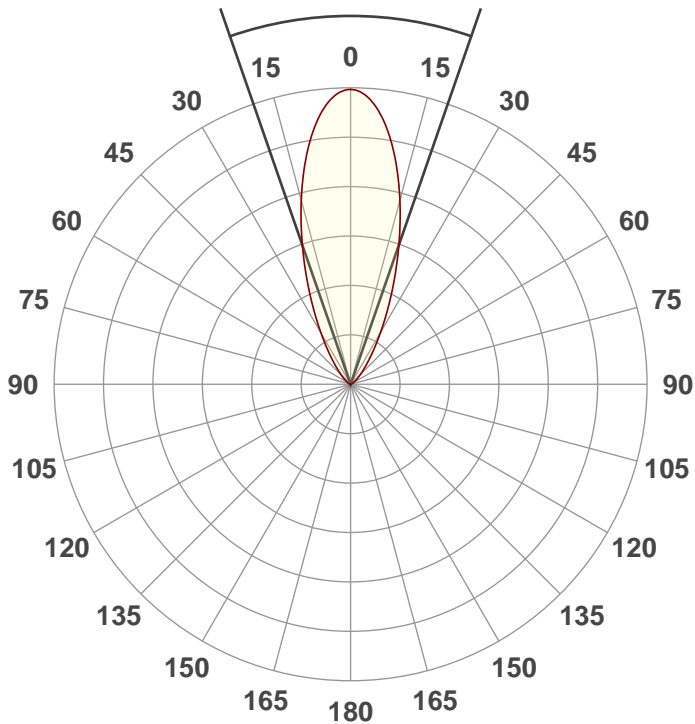
Power: 30.2 W

PF: 0.61



Beam Angle

38.2°



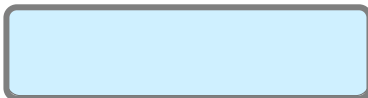
Test:

60Deg White

Date:

11/19/2018

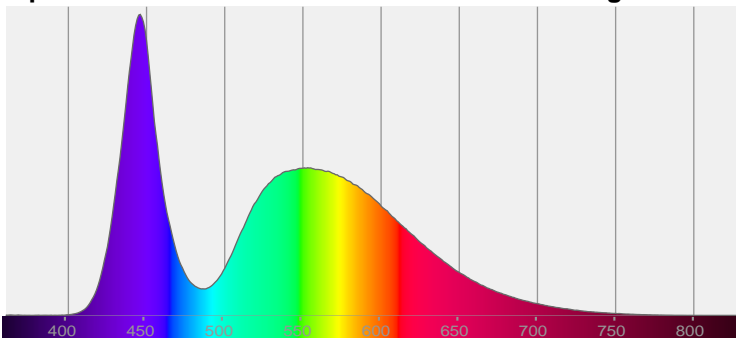
Note:



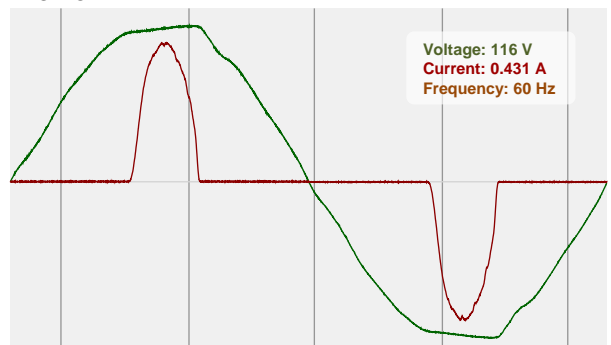
CIE 1931
x: 0.308
y: 0.314

Spectra

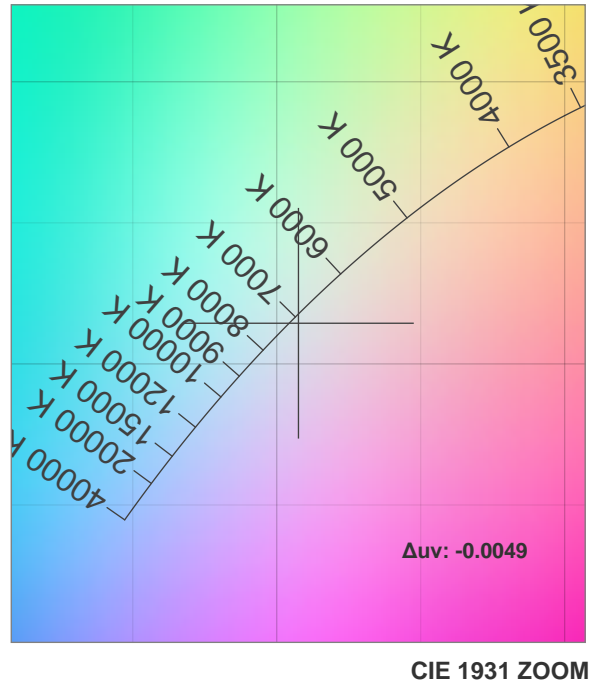
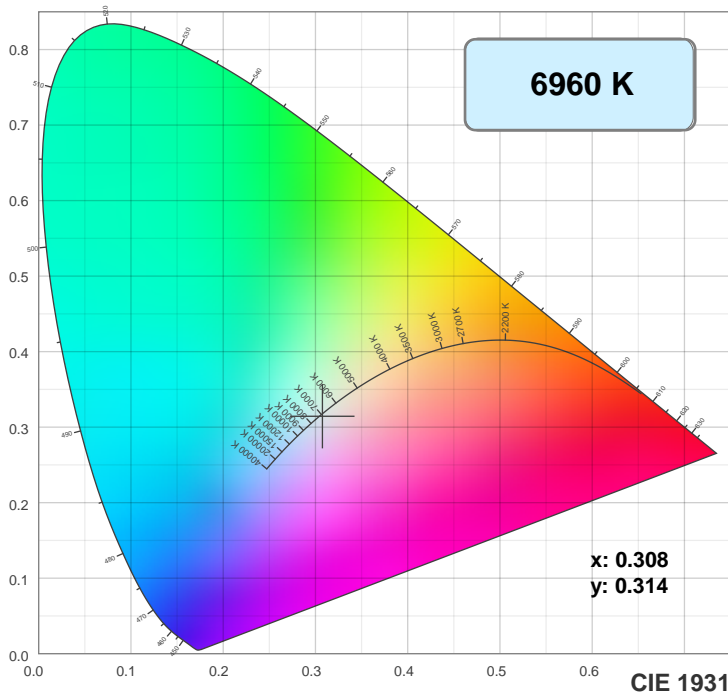
Dominant Wavelength: 360nm



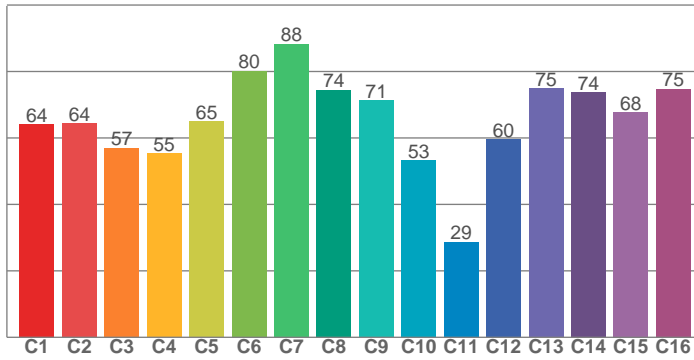
Power



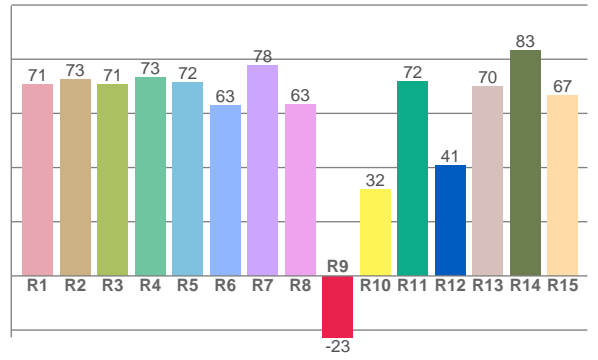
Color Details



TM30: 65.4



CRI: 70.4 (R1-R8)



CRI R values, only R1-R8 are used to calculate final CRI value

R1	R2	R3	R4	R5	R6	R7	R8	R9	R10	R11	R12	R13	R14	R15
70.7	72.7	70.6	73.4	71.6	62.8	77.8	63.5	-22.7	32.0	71.7	40.9	69.8	83.1	66.6

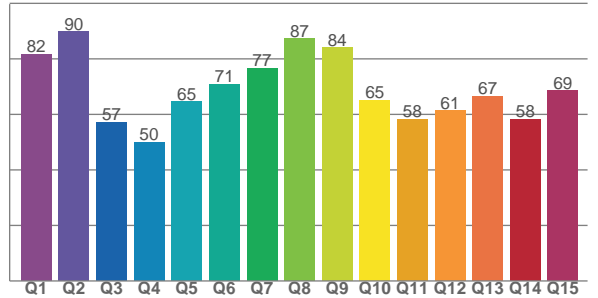
TM30 C values, 16 binned values out of total of 99 C values

C1	C2	C3	C4	C5	C6	C7	C8	C9	C10	C11	C12	C13	C14	C15	C16
64.1	64.3	56.9	55.3	64.9	80.2	88.4	74.4	71.3	53.3	28.7	59.6	74.8	73.7	67.8	74.7

CQS Q values

Q1	Q2	Q3	Q4	Q5	Q6	Q7	Q8	Q9	Q10	Q11	Q12	Q13	Q14	Q15
81.7	89.7	57.3	49.9	64.5	70.9	76.6	87.2	84.1	65.1	58.4	61.3	66.5	58.2	68.6

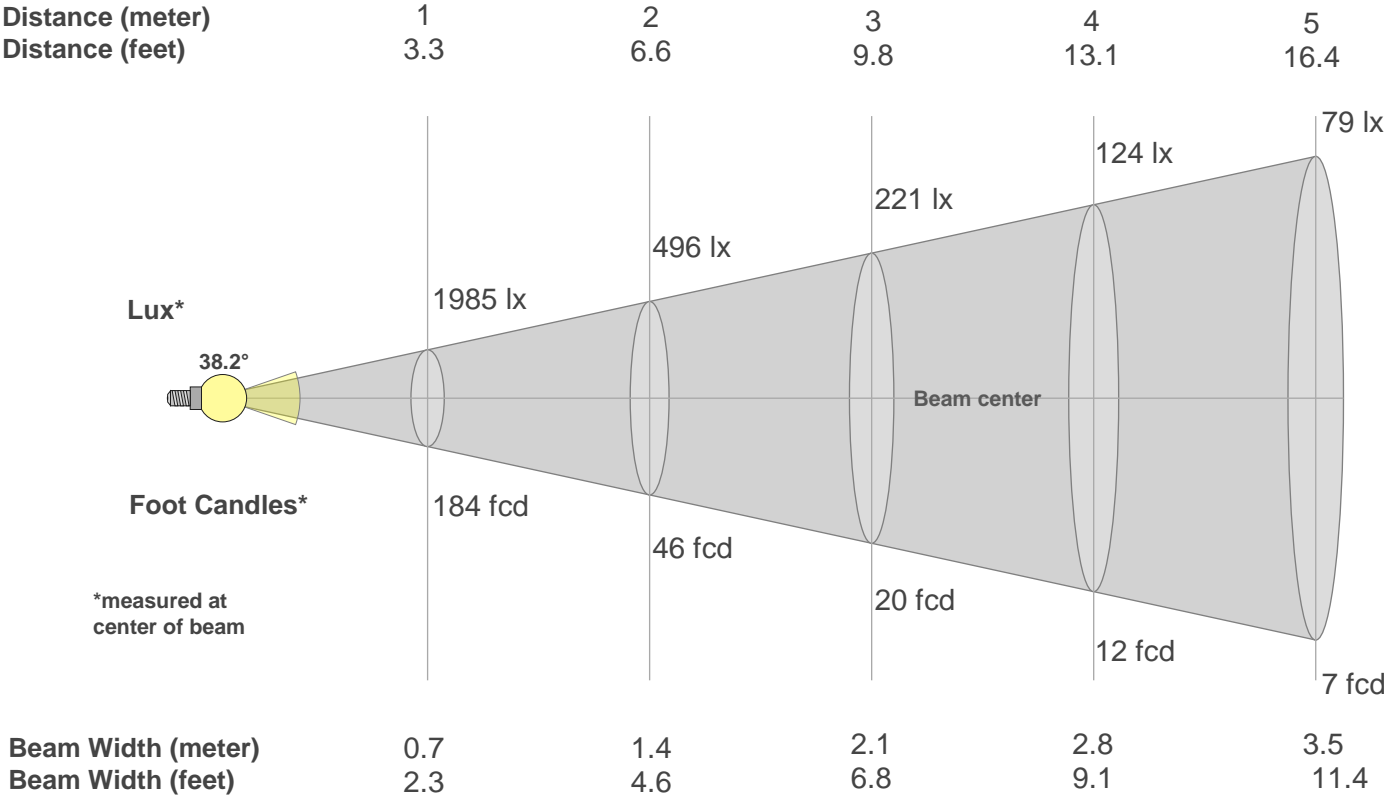
CQS: 67.2



Color Parameters

Color Temperature	Color Rendering Index	Red Component	Color Fidelity	Color Gamut	Color Quality Scale	Color Coordinate CIE 1931	Color Coordinate CIE 1931	Color Coordinate	Color Coordinate	Color Deviation from Black Body
CCT	CRI	CRI R9	TM30 Rf	TM30 Rg	CQS	x	y	u	v	Δuv
6960 K	70.4	-22.7	65.4	94.9	67.2	0.308	0.314	0.200	0.306	-0.0049

Beam Details



Lux*

38.2°

Foot Candles*

*measured at center of beam

1985 lx

496 lx

221 lx

124 lx

79 lx

184 fcd

46 fcd

20 fcd

12 fcd

7 fcd

Beam center

Beam Width (meter)

Beam Width (feet)

0.7

2.3

1.4

4.6

2.1

6.8

2.8

9.1

3.5

11.4

Beam Intensities from 1-20m																				
m	1	2	3	4	5	6	7	8	9	10	11	12	13	14	15	16	17	18	19	20
ft	3.3	6.6	9.8	13.1	16.4	19.7	23	26.2	29.5	32.8	36.1	39.4	42.7	45.9	49.2	52.5	55.8	59.1	62.3	65.6
lx	1985	496	221	124	79	55	41	31	25	20	16	14	12	10	9	8	7	6	5	5
fcd	184.4	46.1	20.5	11.5	7.4	5.1	3.8	2.9	2.3	1.8	1.5	1.3	1.1	0.9	0.8	0.7	0.6	0.6	0.5	0.5

Intensities in 0° C-plane																			
0°	2°	4°	6°	8°	10°	12°	14°	16°	18°	20°	22°	24°	26°	28°	30°	32°	34°	36°	38°
1985	1970	1923	1848	1748	1629	1497	1357	1213	1071	934	804	684	577	482	399	329	270	221	181
100%	99%	97%	93%	88%	82%	75%	68%	61%	54%	47%	40%	34%	29%	24%	20%	17%	14%	11%	9%

Intensities in 90° C-plane																				
0°	2°	4°	6°	8°	10°	12°	14°	16°	18°	20°	22°	24°	26°	28°	30°	32°	34°	36°	38°	
1985	1970	1923	1848	1748	1629	1497	1357	1213	1071	934	804	684	577	482	399	329	270	221	181	
100%	99%	97%	93%	88%	82%	75%	68%	61%	54%	47%	40%	34%	29%	24%	20%	17%	14%	11%	9%	

Intensities in 180° C-plane																				
0°	2°	4°	6°	8°	10°	12°	14°	16°	18°	20°	22°	24°	26°	28°	30°	32°	34°	36°	38°	
1985	1968	1920	1843	1744	1626	1495	1355	1213	1072	935	807	688	581	487	405	335	276	226	186	
100%	99%	97%	93%	88%	82%	75%	68%	61%	54%	47%	41%	35%	29%	25%	20%	17%	14%	11%	9%	

Intensities in 270° C-plane																				
0°	2°	4°	6°	8°	10°	12°	14°	16°	18°	20°	22°	24°	26°	28°	30°	32°	34°	36°	38°	
1985	1968	1920	1843	1744	1626	1495	1355	1213	1072	935	807	688	581	487	405	335	276	226	186	
100%	99%	97%	93%	88%	82%	75%	68%	61%	54%	47%	41%	35%	29%	25%	20%	17%	14%	11%	9%	

Beam Angle 50%	Field Angle 10%	Cutoff Angle 2,5%	Intensity Ratio in 120° Cone	Intensity Ratio in 90° Cone
38.2°	74.4°	103.5°	98.3%	92.4%